

EMCO Sight Flow Indicators Type EFG

Principle

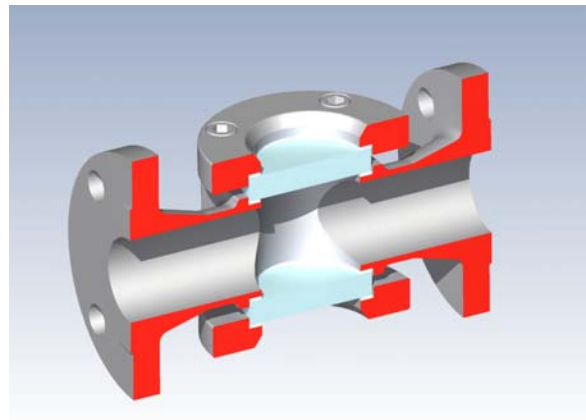
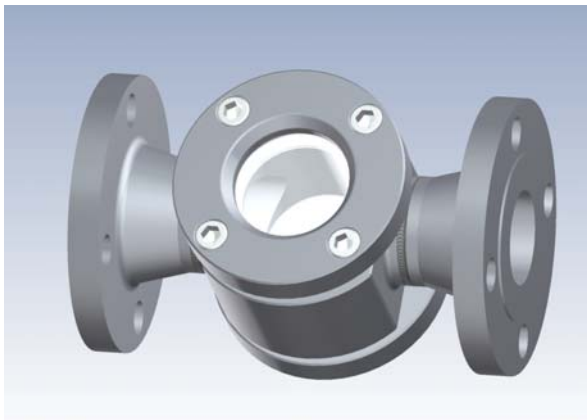
EMCO sight flow indicators are used for locally checking the liquid flow passing in pipe lines.

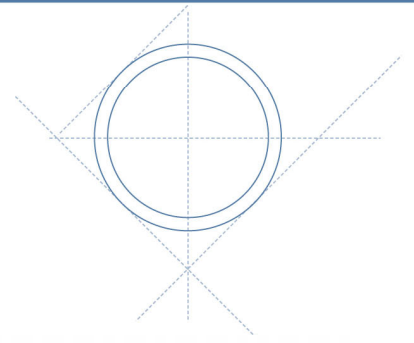
Construction

The EMCO sight flow indicator has a double glass construction – a look through design. The sight glass is toughened or borosilicate glass depending on operating temperature. The flow indicator is made from bar stock material and is therefore available in all machinable materials.

The EMCO sight flow indicators are fully in compliance PED 97/23 EC

- Sizes : DN 15 - 100, ½" - 4". DN 80 and 100, 3 and 4" only up to PN 100, 600 lbs
- Pressure rating : PN 10 - 100, 150 - 2500 lbs,
- Temperature : Toughened glass max 150 °C.
Borosilicate glass max 300 °C.
- Connection : Flanged according to DIN or ANSI standards,
Threaded, internal is standard, up to 2"
Butt weld or socket weld ends to DIN or ANSI standard
- Flange standards : Flanges with flat or raised face according to DIN 2526, 2513 or
2512, RF and RTJ according to B16.5
- Materials : Stainless steel, 22Cr Duplex, 25Cr Duplex, 6Mo,
Hastelloy C276 or 22, Titanium





Options

- Lining : The body can internally be lined with Halar or PTFE
- Paddle wheel : For flow indication
- Flap : For flow rate indication

Accessories

Illuminators

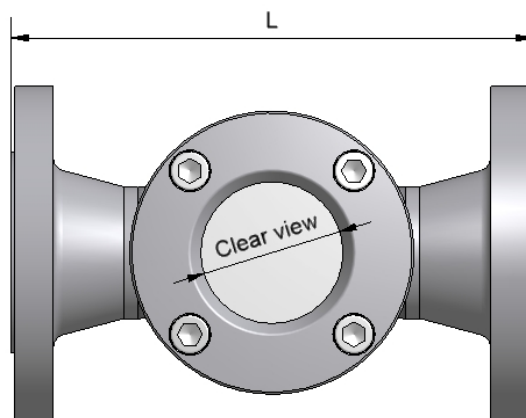


Advantages

Roughed design, high quality glass

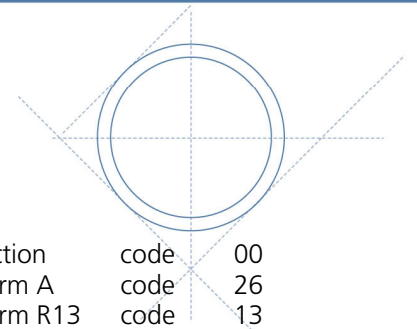
Dimensions:

Size		Clear view	Overall length				
			150 lbs	ANSI 300 lbs	600 lbs	DIN	Threaded or Weld end
DN 15	1/2"	32 mm	182	190	195	155	78
DN 20	3/4"	32 mm	182	190	195	160	78
DN 25	1"	32 mm	182	190	195	160	77
DN 32	1 1/4"	65 mm	240	250	265	165	127
DN 40	1 1/2"	65 mm	240	250	265	210	127
DN 50	2"	65 mm	240	250	265	225	126
DN 65	2 1/2"	65 mm	240	250	265	280	125
DN 80	3"	65 mm	300	315	330	290	145
DN 100	4"	65 mm	310	325	355	305	143



Sight Flow Indicator coding

1. Type			
Look through	code	EFG-1	
Look through with paddle wheel	code	EFG-2	
Look through with flap	code	EFG-3	
Look through with drip ring	code	EFG-4	
2. Size			
DN 15	code	015	
DN 20	code	020	
DN 25	code	025	
DN 32	code	032	
DN 40	code	040	
DN 50	code	050	
DN 65	code	065	
DN 80	code	080	
DN 100	code	100	
3. Connection			
DIN flange	code	10	
ANSI flange	code	20	
Butt weld ends	code	30	
Socket weld ends	code	40	
BSP thread	code	50	
NPT thread	code	60	
4. Pressure rating			
Thread/weld end connection	code	000	
PN 16, DIN std.	code	016	
PN 40, DIN std.	code	040	
PN 100, DIN std.	code	100	
PN 160, DIN std.	code	160	
PN 250, DIN std.	code	250	
150 lbs, ANSI std.	code	015	
300 lbs, ANSI std.	code	030	
600 lbs, ANSI std.	code	060	
900 lbs, ANSI std.	code	090	
1500 lbs, ANSI std.	code	150	
2500 lbs, ANSI std.	code	250	



5. Facing			
Thread/weld end connection	code	00	
DIN 2526 Form A	code	26	
DIN 2513 Form R13	code	13	
DIN 2512 Form N	code	12	
Raised face RF, ANSI standard	code	RF	
Flat face FF, ANSI standard	code	FF	
Ring Type Joint RTJ, ANSI standard	code	RTJ	
6. Material			
AISI 316	code	02	
22Cr Duplex	code	03	
25Cr Duplex	code	04	
6Mo	code	05	
Hastelloy C	code	06	
Titanium	code	07	
Monel	code	08	
Inconel	code	09	

Examples

2" Sight Flow Indicator look trough with ANSI flanges, 150 lbs RF in 6Mo material

EFG-1-050-20-015-RF-05